

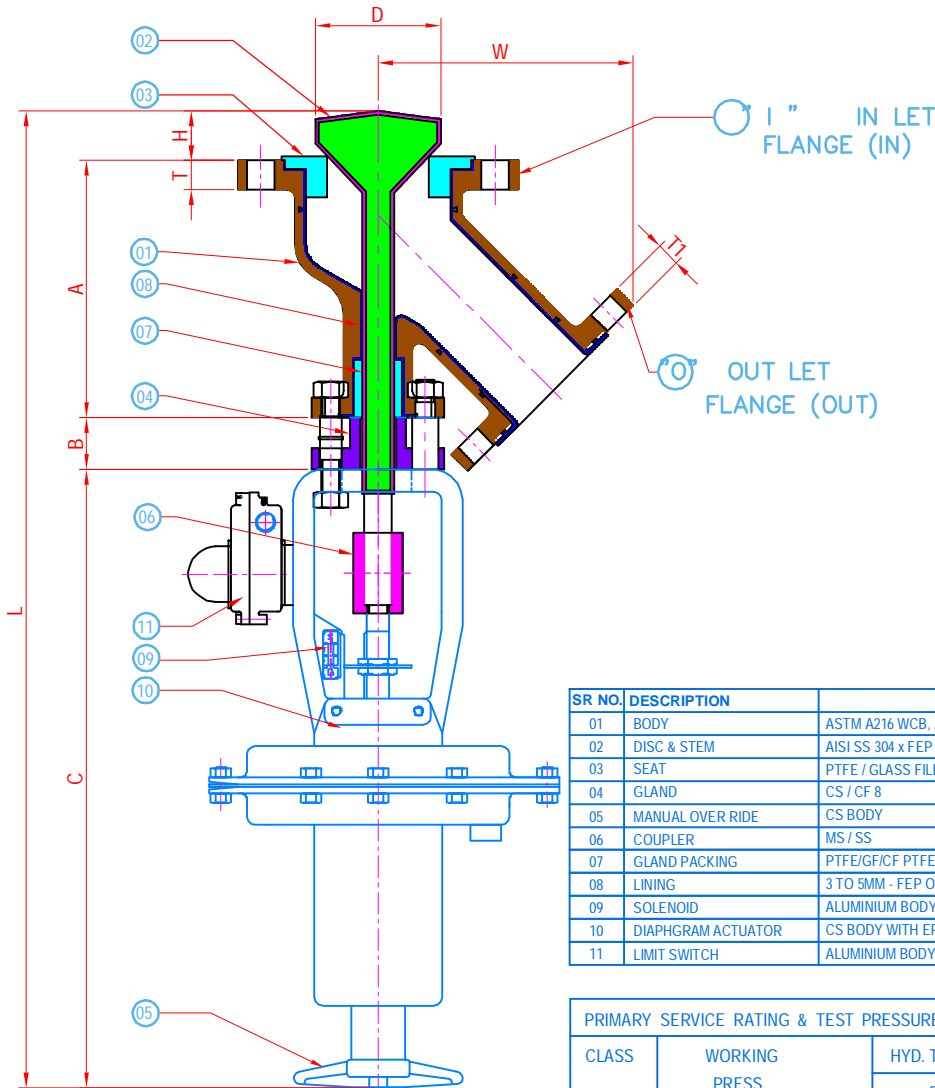
Icon Valves & Engineering Pvt. Ltd.

www.ptfelinedproducts.com; ptf@ivevalves.com



DIAPHRAGM ACTUATED FEP / PFA LINED FLUSH TANK BOTTOM VALVE 'Y' TYPE OPEN UP 150# SHORT HUB TOP MOUNT

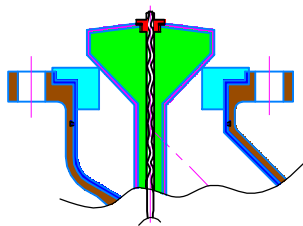
NOTE: This Drawing, Catalogue, Photographs and Information there off are sole & Exclusive Property of "IVE". Icon Valves & Engineering Pvt. Ltd., Mumbai. It cannot be Copied, Distributed or Circulated to any other firm. Party or Individual without written consent from us. We keep our rights reserved to make any changes time to time in technical specification & dimension without prior Notice. The dimensions, Drawing & Photographs illustrated are approximate & may some time differ from the actual product. Please ask for final Drawings & Photos against orders.



SR NO.	DESCRIPTION	MATERIAL	QTY.
01	BODY	ASTM A216 WCB, ASTM A351 / CF8 / CF8M x FEP / PFA LINED	1
02	DISC & STEM	AISI SS 304 x FEP / PFA LINED	1
03	SEAT	PTFE / GLASS FILED PTFE	1
04	GLAND	CS / CF 8	1
05	MANUAL OVER RIDE	CS BODY	1
06	COUPLER	MS / SS	1
07	GLAND PACKING	PTFE/GF/CF PTFE WITH PTFE ROPE	1
08	LINING	3 TO 5MM - FEP OR PFA LINING	1
09	SOLENOID	ALUMINIUM BODY, 3/2 OR 5/2 WAY	1
10	DIAPHRAGM ACTUATOR	CS BODY WITH EPDM DIAPHRAGM DIRECT / REVERSE ACTING	1
11	LIMIT SWITCH	ALUMINIUM BODY, WITH DOME INDICATOR	1

PRIMARY SERVICE RATING & TEST PRESSURE				
CLASS	WORKING PRESS.	HYD. TEST PRESSURE		
		BODY	SEAT	TEMP.
150	100 PSIG	225 PSIG	150 PSIG	150/200°C
AIR TEST-SEAT		80 PSIG ±10 PSIG; SPARK TEST: 10 KVA		

TECHNICAL DATA	
DESIGN & MANUFACTURING STD.	MANUFACTURER'S STD.
TESTING & INSPECTION STD.	API 598
END CONNECTIONS :	FLANGED AS PER ANSI B-16.5
STANDARD RESIN SPECIFICATION	PFA : ASTM D 3418 / FEP : ASTM D 2116



PROVISION RTD SENSOR

FLUSH TANK BOTTOM VALVE DISC OPENING INTO THE TANK DIAPHRAGM ACTUATED SHORT HUB TOP MOUNT													
SIZE (mm)	Approx. L = A+B+C	H	D	Approx. W			(FLANGE DIMENSIONS) I		T	(FLANGE DIMENSIONS) O		WT./KG. FOR VALVE ONLY	
				A	B	C	I	T1		O	T1		
1.1/2"	1"	↓	↓	140	157	100	AS PER 1.1/2" NB ASA 150#		14	AS PER 1" NB ASA 150#		11	10
2"	1.1/2"			165	183	110	AS PER 2" NB ASA 150#		16	AS PER 1.1/2" NB ASA 150#		14	13
3"	2"			176	203	125	AS PER 3" NB ASA 150#		19	AS PER 2" NB ASA 150#		16	16
4"	3"			210	210	150	AS PER 4" NB ASA 150#		24	AS PER 3" NB ASA 150#		19	22
4"	2"			235	203	150	AS PER 4" NB ASA 150#		24	AS PER 2" NB ASA 150#		16	20
6"	4"			260	260	150	AS PER 6" NB ASA 150#		25	AS PER 4" NB ASA 150#		24	38